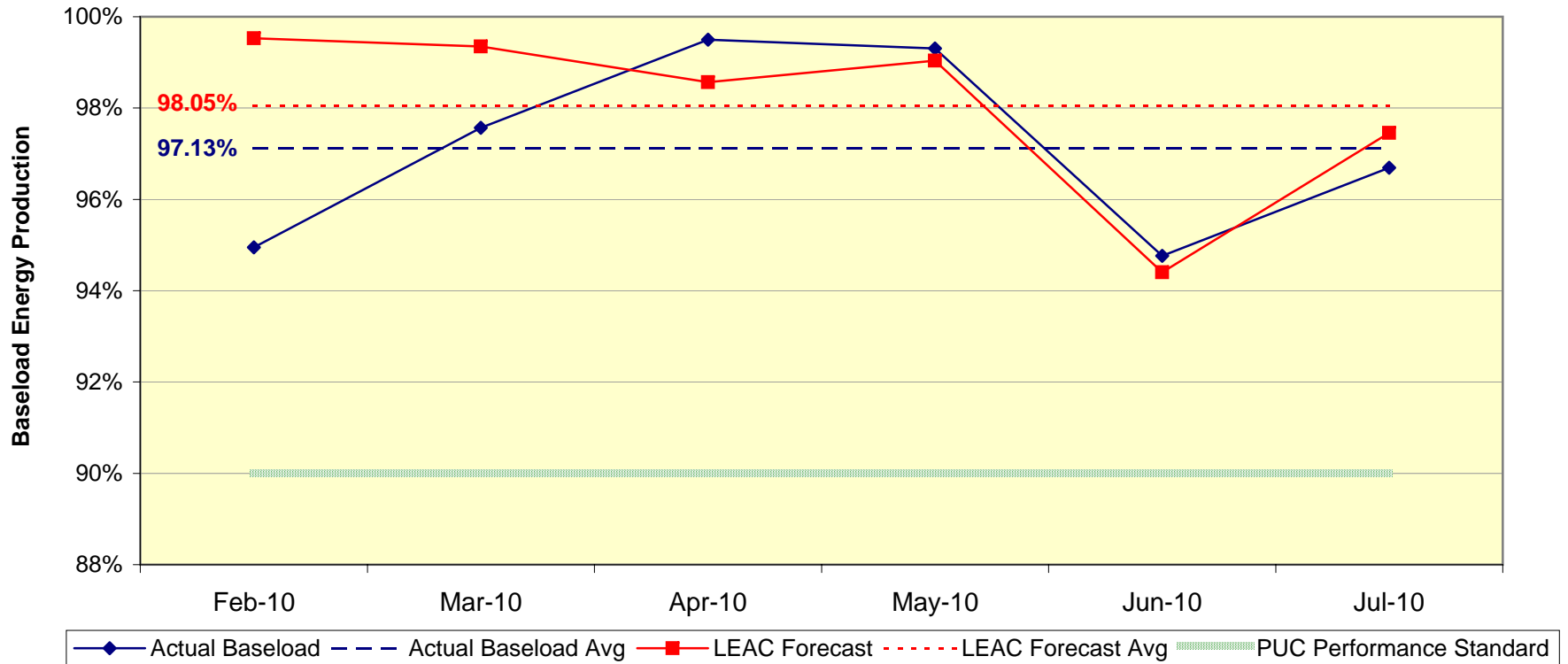


## BASELOAD DISPATCH PERFORMANCE

LEAC Period Feb 2010 - Jul 2010



### FEB 2010:

**Cabras #1** tagged out for 8 days due to air pre-heater and Heat Pump #5 feed water heater repairs.

**Cabras #2** tagged out for 3 days due to possible boiler tube leaks.

**Tanguisson #1** was derated to 20 MW for 6 days due to insufficient sea water cooling.

**Tanguisson #2** was on maintenance outage for 2 days for boiler flue gas leak repairs

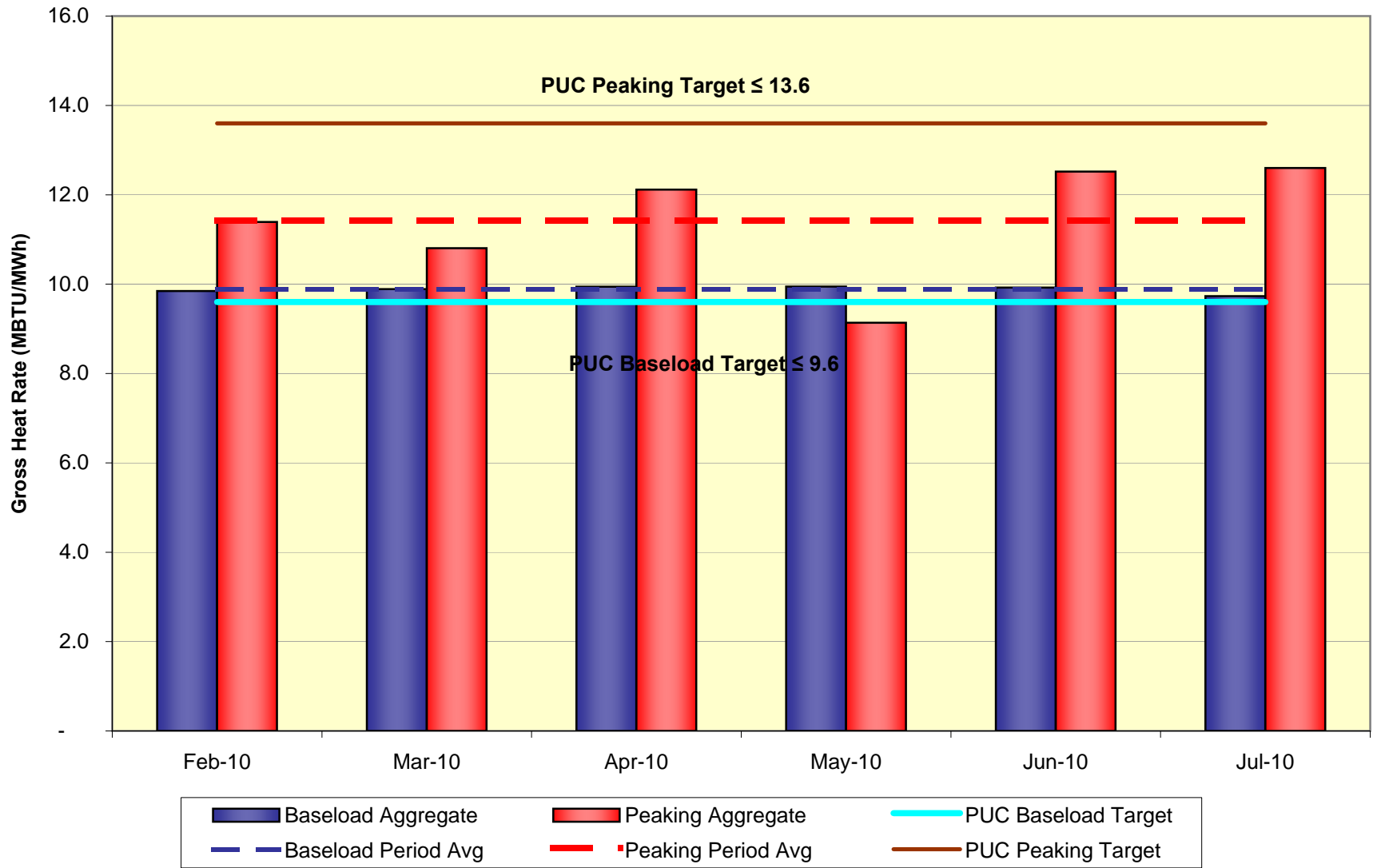
### MAR 2010:

**Cabras #1** offline from Mar.29 to 31 due to possible boiler tube leaks

**Cabras #2** offline from Mar.3 to 16 due to possible boiler tube leaks

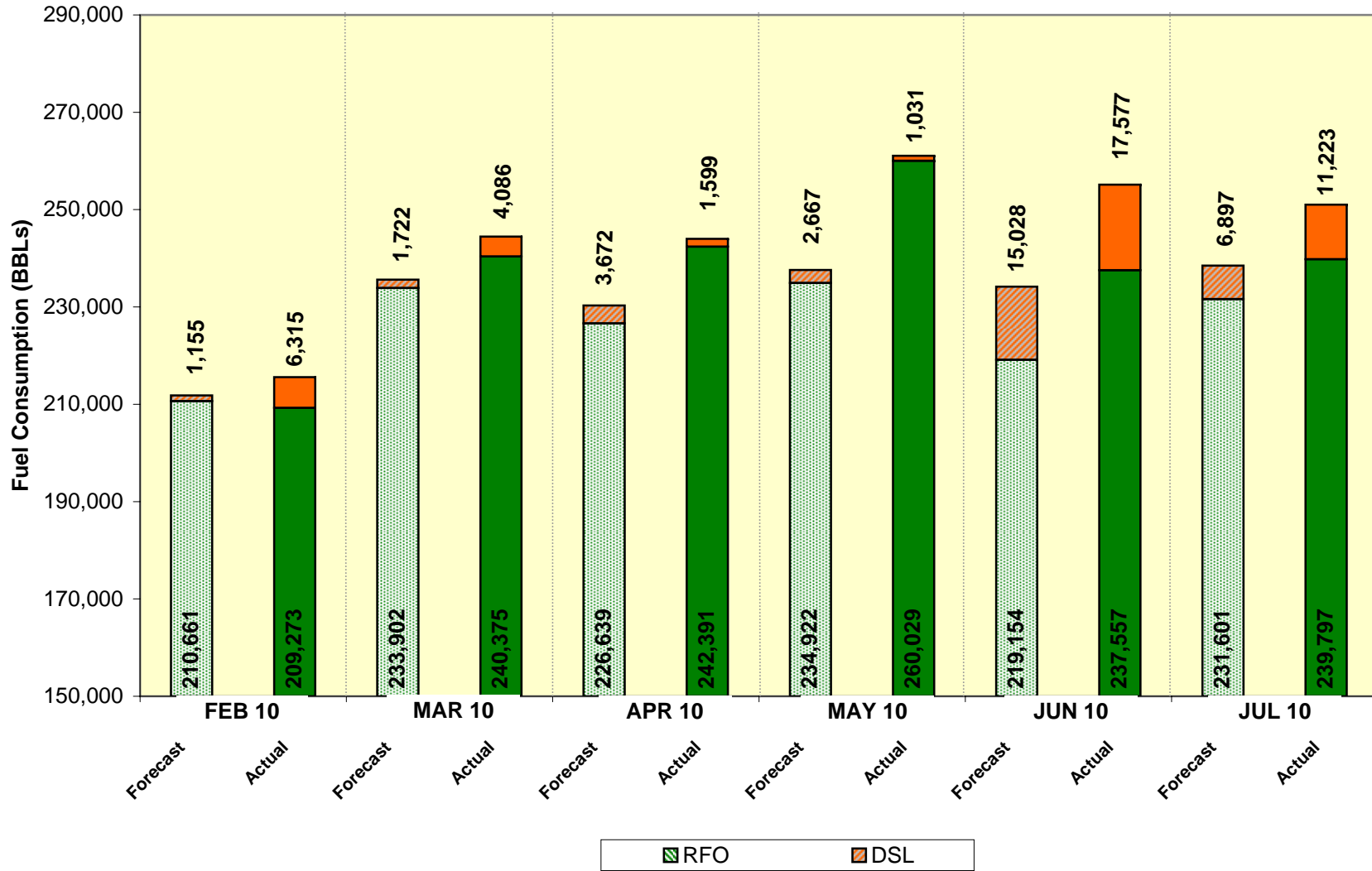
# GROSS HEAT RATE PERFORMANCE

LEAC Period Feb 2010- Jul 2010

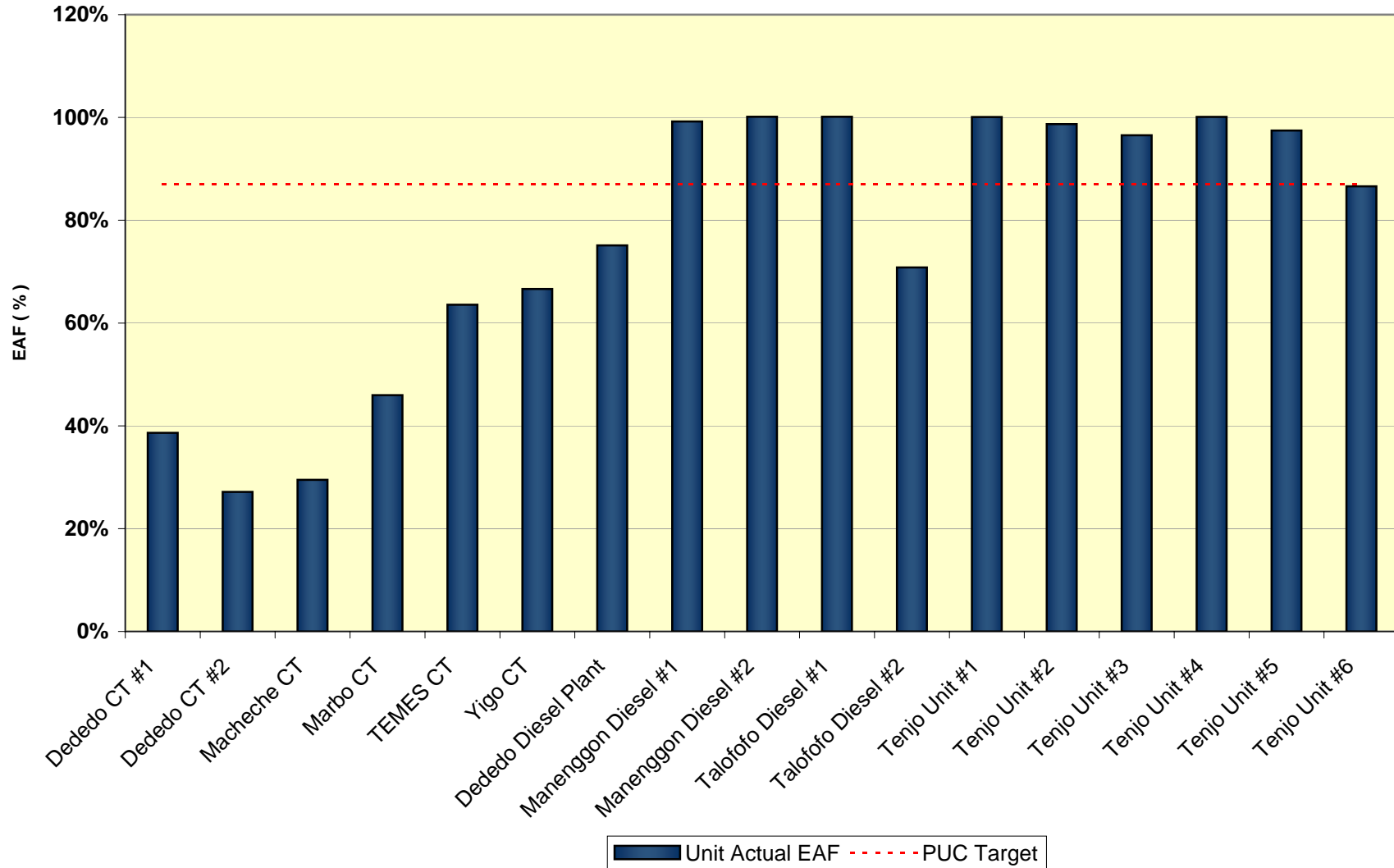


## FUEL USAGE PERFORMANCE

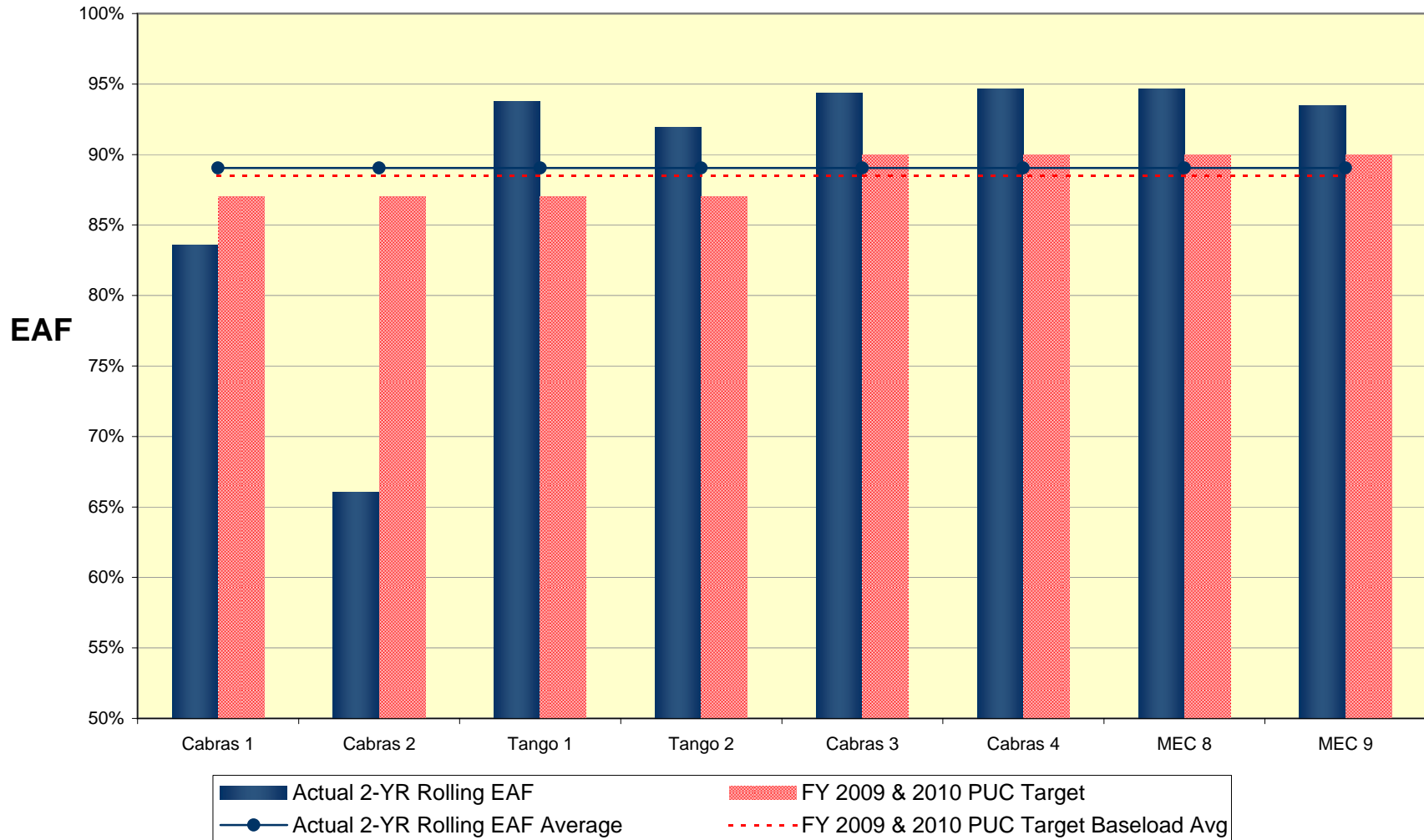
LEAC Period Feb 2010 - Jul 2010



**EQUIVALENT AVAILABILITY FACTOR (EAF)  
DIESEL UNITS  
2-year Rolling Average (Oct 2008 - Sept 2010)**

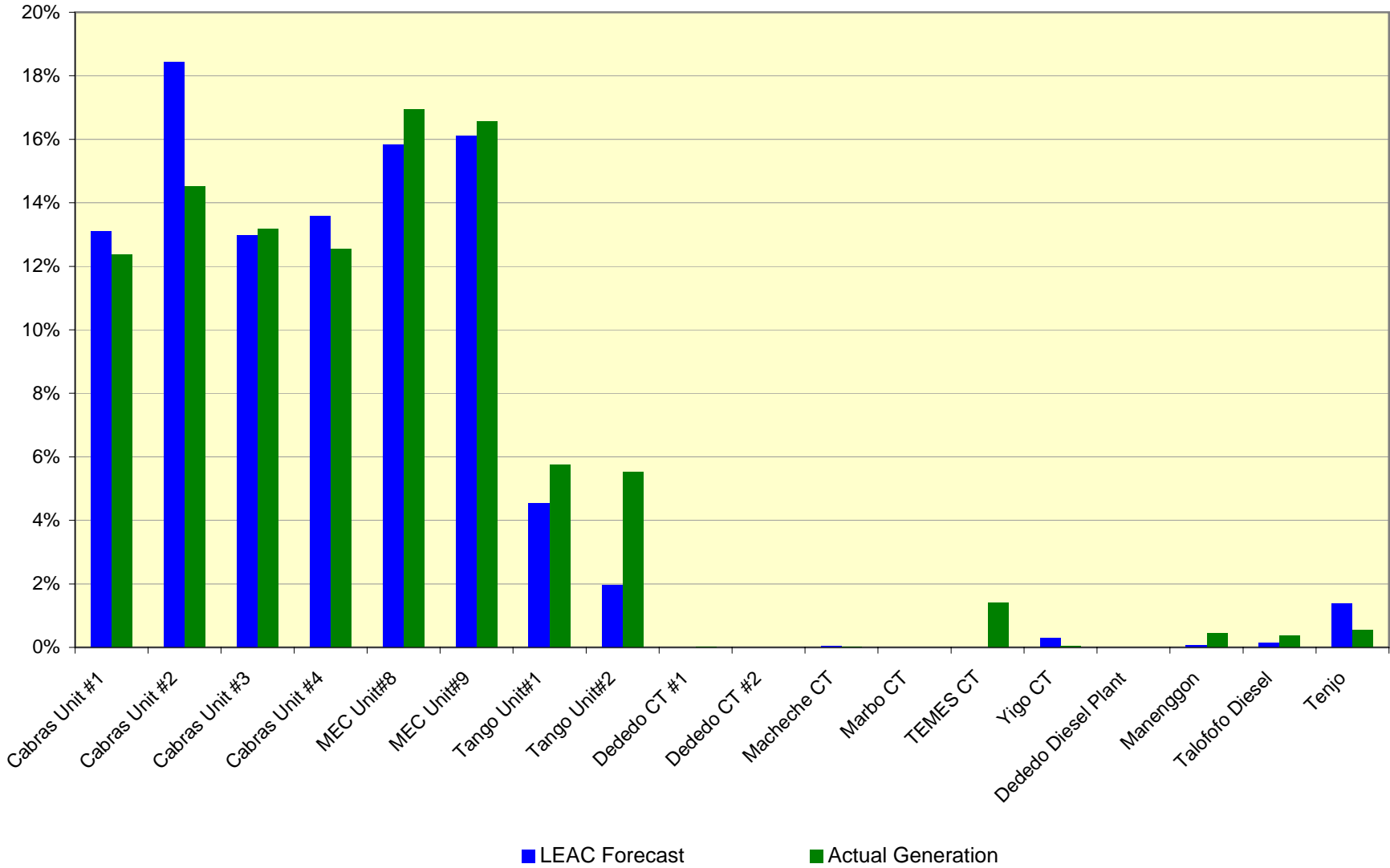


**EQUIVALENT AVAILABILITY FACTOR (EAF)  
BASELOAD UNITS  
2-year Rolling Average (Oct 2008-Sept 2010)**



## IWPS DISPATCH PERFORMANCE

LEAC Period Feb 2010 - Jul 2010



## FUEL SAVINGS RELATIVE TO 83% BASELOAD USE as of Sept 2010

